

TPLUS™ CLOUD for Fleet Supervisors & Allocators

Staying organised and in control



Keeping you in touch with each and every stage

Managing and coordinating a transport fleet means you're constantly in demand each and every day. You need first-class systems and features available to make sure everything runs smoothly without dropping the ball.

It's crucial to ensure that the drivers you've assigned complete their delivery tasks smoothly, and without incident.

Whether you're locating drivers, managing customer expectations, allocating vehicles and equipment, watching for delays, or any number of other tasks you have daily.

With **TPLUS™ CLOUD** you'll have the systems, tools, and features you need to get the job done.

Ready to get started improving your business and customers' delivery experience?

Request your free demo today to find out how **TPLUS™ CLOUD** improves processes, enhances visibility, and supports your business on every leg of your journey.

[REQUEST YOUR FREE DEMO ↗](#)

Get your job done with tools built with you in mind

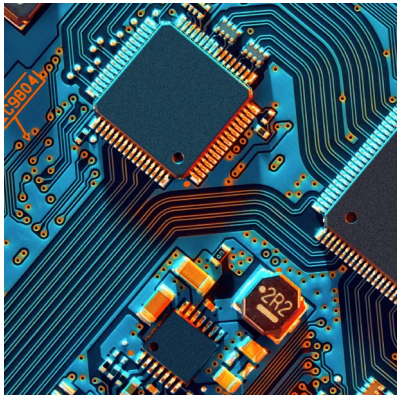
Throughout your day you need to trust critical information available at any moment. Without a tightly integrated system—built with you in mind—even the slightest change can cause delays, or at worst disaster.

Don't continue to suffer with multiple systems that make it difficult to get your job done, instead enhance your workplace and harness the power of **TPLUS™ CLOUD**.

With in-built features like Multi-Map Dispatch, near real-time GPS location tracking, advanced scheduling and reporting, and two-way communication via smartphone apps directly to your drivers, **TPLUS™ CLOUD** makes it easier for you to ensure your deliveries are on time, every time.

Need to deploy a robust on-premise solution for your office? TPLUS™ EXTRA is for you.

[SEE THE BENEFITS OF TPLUS™ EXTRA ↗](#)



Exceed your customers' expectations, every time

In today's crowded transport and courier marketplace it's incredibly important you deliver on your customer promise.

It's crucial you avoid dispatch issues, driver delays, unreliable reports, and poor delivery outcomes.

With **TPLUS™ CLOUD** you'll have everything you need to ensure that not only are your customers' needs and expectations simply met, but that they are exceeded over and over, every time.

Get in touch today with our sales team to discuss how **TPLUS™ CLOUD** can improve your delivery needs.

[GET IN TOUCH ↗](#)

Product features for Fleet Allocators

It doesn't matter if you're a startup business with just one vehicle, or a multi-national delivery service with thousands. We've designed **TPLUS™ CLOUD** to grow as you do and be right there with you.

Every step of the way

With rich features designed for your management and operation needs, you can be sure that **TPLUS™ CLOUD** has been developed specifically to meet the demanding requirements of the ever-growing transport and courier industries.

1 Job Booking & Allocation

Regardless if you're booking one task, or your entire day, **TPLUS™ CLOUD** makes it easy for you and your customers to book in new jobs, ready to be dispatched in minutes.

TPLUS™ CLOUD allows you to quickly and easily view and manage all incoming job requests, and allocate them to the appropriate drivers or field workers. Ensuring jobs are dispatched to the most suitable and available driver, increasing efficiency and reducing the risk of delays or missed appointments.

2 Multi-Map Dispatching

TPLUS™ CLOUD is designed for a seamless dispatching experience and working in concert with drivers' mobile phones and devices.

We call this **Multi-Map Dispatch (MMD)**

Easily allocate jobs to devices and track them in real-time with maps.

MMD uses GPS location data from drivers' devices to drive the maps and reporting.

With the **Multiple Document Interface**, you can open multiple windows within one frame and they all communicate with each other.

The app can run on one or multiple screen configurations—even 4K television screens—and currently supports 3 integrated maps, giving you different perspectives for better insight into your fleet.

MMD is highly customizable and can handle thousands of high volume jobs per day across multiple dispatchers. It also works just as well for smaller operations, with the ability to use it on tablets with a wireless hotspot for on-the-go dispatch operations.

MMD is a must-have for any fleet manager looking to streamline their dispatching process and stay on top of their fleet's activities.

3 MMD for Grouping of Work Areas

Dispatch Groups are highly flexible and configurable, allowing you to manage your work in the way that best suits your needs.

Have as many Dispatch Groups and areas as you want, so operators can easily switch between them as the day changes or staff come and go.

MMD allows you to group your work in a way that makes sense for you, so you can easily assign tasks to the right drivers and stay on top of your fleet's activities.

4 MMD for Job Allocations

Gain ultimate control over your unallocated and allocated work, with the ability to pre-sort and sort on the fly by any column. With the use of colour block icons, you'll always have up-to-date information on the number of allocations, client callbacks, client rankings, job statuses, and more.

MMD allows you to configure countdown clocks for each job, so you can see at a glance which jobs are running late, on time, or ahead of time.

The preallocation and allocation process is easy, either by using right-click menu actions or by entering the driver number. And with the support of auto-allocation and queues to allocate tasks, you'll be able to dispatch jobs quicker and more efficiently than before.

MMD also supports bulk job allocation, preallocation, and deallocation are all supported, as well as client ringbacks with time buys.

You'll have access to features like internal mail, query mail, managers' priority, split jobs, map click events, manual job POD's, and job updates on the fly with signatures and photo images, on hold jobs, and dangerous goods jobs, all handled with ease.

5 MMD for Drivers

MMD gives you the flexibility to work with drivers the way you prefer.

MMD is designed to give you a comprehensive view of your drivers, with colourful icons and colour blocks that show you the latest job statuses, log on/off, device connectivity, daily earnings, device diagnostics, last known suburb, idle tracking, and GPS tracking.

With built-in alerts for many features, including connectivity and lack of GPS, you'll always be in the know about what's happening with your fleet.

Two-way messaging with the drivers' app, device diagnostics, last known suburb, idle tracking, and integrated driver and vehicle photos are all supported.

See drivers move in near real-time on maps, display the driver trail, and run GPS reports to see exact suburb/positional references by time and stationary information. You'll have access to up-to-date driver earnings, so you can stay on top of your fleet's performance.

6 Customer-Facing Web Portals

TPLUS™ CLOUD offers your customers powerful web portals that allow them to easily book, track, and manage large volumes of jobs on a daily basis.

Give your customers advanced—near real-time—features including daily job tracking, date range tracking, and specific job tracking, all providing detailed information including event times, signatures, and photos.

Customers can take advantage of features such as daily bookings, advance bookings, on-hold bookings, and dangerous goods bookings. They can also filter by service type, view visual images of vehicle types and dimensions, and access advanced tools like multidimension entry, pallet returns, and email and SMS alerts.

Our web portals incorporate the latest web technologies and are fully responsive, providing customers with a seamless experience. Allowing them to manage deliveries right from their browser of choice.

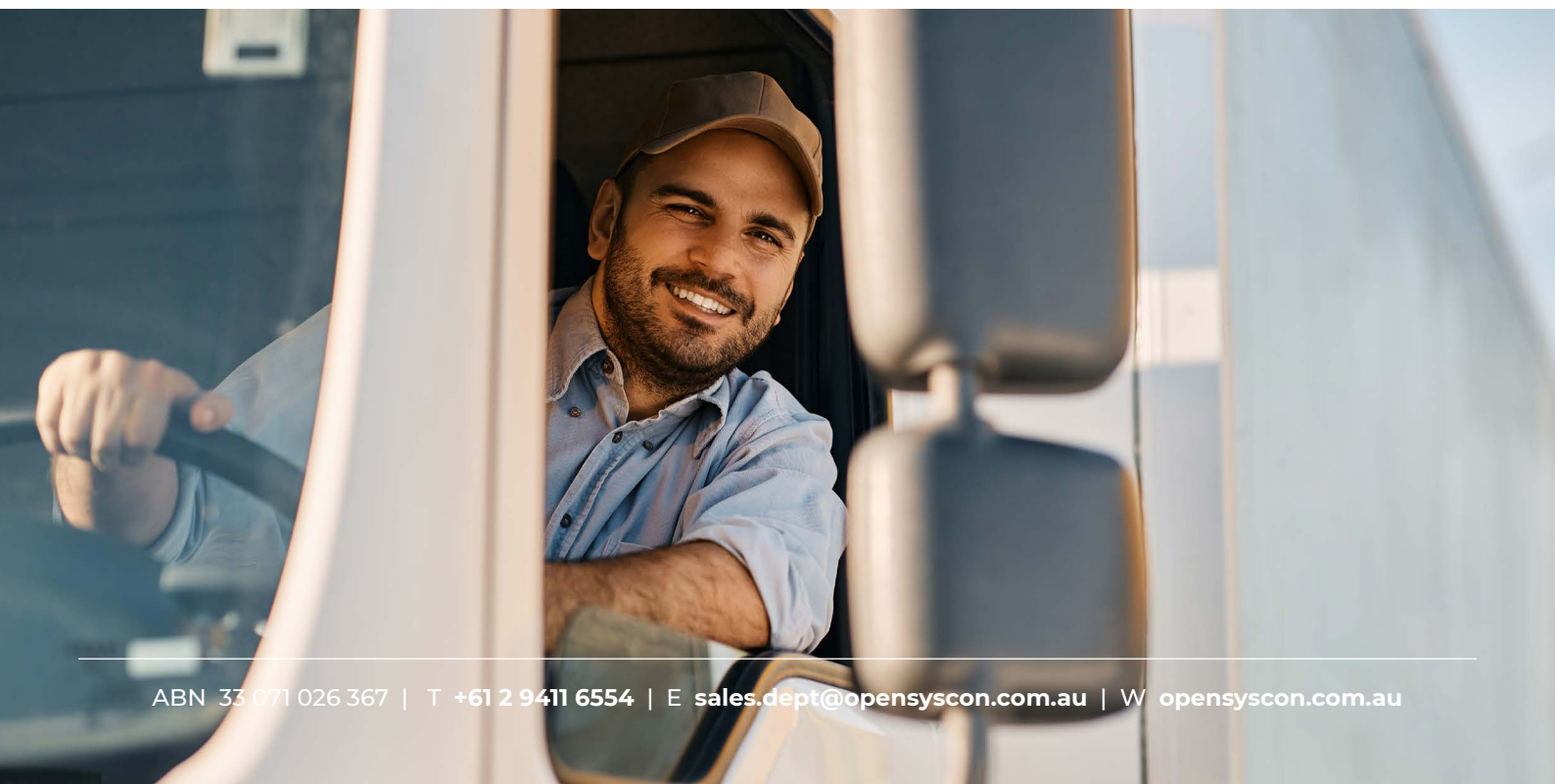
7 TPLUS™ Smartphone Apps

TPLUS™ MOBILE has been in use, right across Australia, for over 10 years.

With **TPLUS™ MOBILE**, you can easily track the location of your drivers using background GPS, as well as capture signatures, photos, and other important information.

Clients have the option to use their own devices or purchase them for the drivers. The app is supported on both Android and IOS phones, and can also be configured for use on other devices such as tablets and laptops.

With a simple to use interface, **TPLUS™ MOBILE** makes it easy for drivers to capture job event data with just a few taps. With features like multi-job handling, on-device routing, barcode scanning, two-way messaging, offline data storage and synchronisation, as well as driver safety agreements, breaks, and logins.





For your management team

As a manager, it's important to stay ahead of the competition by offering top-notch service and delivery and with **TPLUS™ CLOUD**, you can do just that.

Our platform offers a range of features designed to streamline your operations and make your job easier, giving you a competitive edge in the crowded transport and courier marketplace.

Multi-Map Dispatch allows you to easily assign and track drivers and deliveries, ensuring that your fleet is always on the right track. Real-time GPS tracking allows you to monitor the location and status of your vehicles at all times, giving you peace of mind and the ability to respond quickly in case of any issues.

Helping you to offer a more accurate delivery time to your customers, which will increase their satisfaction and loyalty.

Advanced scheduling and reporting features within **TPLUS™ CLOUD** allows you to optimise your fleet operations, by creating efficient and effective routes, and monitoring the performance of your drivers and vehicles. This can help you identify and address any potential issues early on, reducing downtime and improving your overall performance.

Resulting in cost-savings and an increase in your efficiency and effectiveness.

With two-way communication via our smartphone apps directly to your drivers, **TPLUS™ CLOUD** makes it easier for you to ensure your deliveries are on time, every time. This can also help you to respond quickly to any unexpected events, such as traffic delays or weather conditions, and make necessary adjustments to ensure your deliveries are completed on time.

By using **TPLUS™ CLOUD**, you'll exceed your customers' expectations by avoiding dispatch issues, driver delays, unreliable reports, and poor delivery outcomes. This will increase your customer satisfaction and retention, leading to more repeat business and ultimately more revenue. Don't miss out on this opportunity to take your business to the next level.

Upgrade to **TPLUS™ CLOUD** today and see the difference it can make for your fleet management operations.



Customer Success Stories

For more than 18 years Open Systems has developed our transport software system to the ever expanding requirements of our business.

Steve and his staff have always been supportive to our needs, providing technical support and effective solutions whenever required (even after hours - being the nature of the transport industry).

CHARMAIN RIMENE
CEVA (Aust) Pty Ltd

The TPLUS™ CLOUD system is extremely impressive and handles every need that we have and so much more.

The customer service from Open Systems Consulting is fantastic and the staff are always ready to help you in any way they can.

We are extremely happy with Open Systems Consulting and would highly recommend them to anyone looking for an effective, efficient and easy to use transport system.

MANDY FERRIE
Swift Taxi Trucks & Couriers



Request a Free Demo Today

Are you looking to enhance your business operations and improve the delivery experience for your customers? Look no further than **TPLUS™ CLOUD**.

By requesting a free demo, you can discover how this innovative solution can streamline processes, increase visibility, and support your business at every stage of your logistics journey.

Don't miss out on the opportunity to take your transport business to the next level.

Request your demo now and see the benefits **TPLUS™ CLOUD** can provide.

Request your free demo today to find out how **TPLUS™ CLOUD** improves processes, enhances visibility, and supports your business on every leg of your journey.

[REQUEST YOUR FREE DEMO ↗](#)

OSC
open system
consulting