

# TPLUS™ CLOUD for Logistics & Operations Managers

Keep on top of everything, even during the busy times



## Stay on top of your day

When you're responsible for the daily operation of your delivery services there's a lot for you to be on top of each and every day.

Planning delivery routes, coordinating tight schedules, allocating fleet managers, ensuring smooth and efficient flow of customers' packages, or one of the other thousand things your day demands.

You need advanced features and automations built specifically for courier and transport industries to help you simplify your delivery operations.

With the flexibility of **TPLUS™ CLOUD** you'll have all the tools you need to ensure your growing business, right at your fingertips.

## Ready to get started improving your business and customers' delivery experience?

Request your free demo today to find out how **TPLUS™ CLOUD** improves processes, enhances visibility, and supports your business on every leg of your journey.

[REQUEST YOUR FREE DEMO ↗](#)

## The right choice, every time

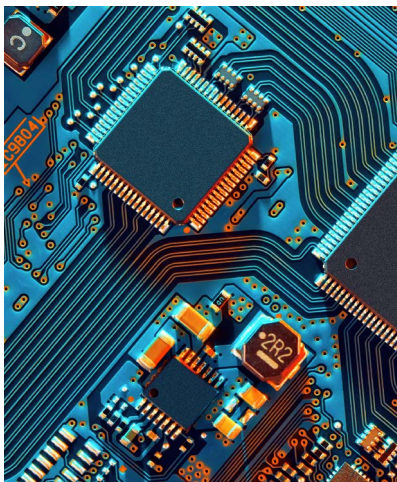
You need to be able to quickly and easily access your information in order to make minute-by-minute decisions that keep your customers' shipments on schedule, and within budget.

The right software helps you by providing a central location for all of your data related to shipments features for tracking inventory, managing shipping schedules, and calculating the most efficient routes.

With a user friendly interface, and easy to operate features, **TPLUS™ CLOUD** gets you moving and helps logistics managers keep on top of everything, even during the busy times.

# Need to deploy a robust on-premise solution for your office? TPLUS™ EXTRA is for you.

[SEE THE BENEFITS OF TPLUS™ EXTRA ↗](#)



## Manage more effectively

With the many challenges that Logistics and Fleet Managers face in today's ever-changing business landscape they must be able to effectively manage inventory, transportation, and other resources while ensuring that products are delivered on time and within budget.

Logistics and Fleet Managers need to effectively communicate with other members of the supply chain, including suppliers, manufacturers, retailers, and customers.

**TPLUS™ CLOUD** is designed specifically to meet the needs of the delivery and transport industries, providing your team with the tools they need to succeed.

Get in touch today with our sales team to discuss how TPLUS™ CLOUD can improve your delivery needs.

[GET IN TOUCH ↗](#)

# Product features for Logistics & Operations Managers

It doesn't matter if you're a startup business with just one vehicle, or a multi-national delivery service with thousands. We've designed **TPLUS™ CLOUD** to grow as you do and be right there with you.

## Every step of the way

With rich features designed for your management and operation needs, you can be sure that **TPLUS™ CLOUD** has been developed specifically to meet the demanding requirements of the ever-growing transport and courier industries.

### 1 Job Booking & Allocation

Regardless if you're booking one task, or your entire day, **TPLUS™ CLOUD** makes it easy for you and your customers to book in new jobs, ready to be dispatched in minutes.

**TPLUS™ CLOUD** allows you to quickly and easily view and manage all incoming job requests, and allocate them to the appropriate drivers or field workers. Ensuring jobs are dispatched to the most suitable and available driver, increasing efficiency and reducing the risk of delays or missed appointments. Staff can book or update jobs from anywhere, whether it's from home, the office, or on the go.

**TPLUS™ CLOUD** offers a variety of job types including permanent, daily, advance, on hold, dangerous goods, cash, and more, all with the help of type-ahead dropdowns for quick access to clients, drivers, suburbs, services, and more. Enter and update dimensions and event time information, such as time of arrival and departure, with ease.

**TPLUS™ CLOUD** screens are fast and intuitive, with minimal navigation and multiple tabs for quick access to extensive information such as job details, client information, job notes, and driver and job positions using integrated maps.

## 2 Multi-Map Dispatching

**TPLUS™ CLOUD** is designed for a seamless dispatching experience and working in concert with drivers' mobile phones and devices.

We call this **Multi-Map Dispatch (MMD)**

Easily allocate jobs to devices and track them in real-time with maps.

MMD uses GPS location data from drivers' devices to drive the maps and reporting.

With the **Multiple Document Interface**, you can open multiple windows within one frame and they all communicate with each other.

The app can run on one or multiple screen configurations—even 4K television screens—and currently supports 3 integrated maps, giving you different perspectives for better insight into your fleet.

**MMD** is highly customizable and can handle thousands of high volume jobs per day across multiple dispatchers. It also works just as well for smaller operations, with the ability to use it on tablets with a wireless hotspot for on-the-go dispatch operations.

**MMD** is a must-have for any fleet manager looking to streamline their dispatching process and stay on top of their fleet's activities.

## 3 On-Device Routing

With drivers and vehicles out in the field it's important they work as efficiently as possible. Allowing managers to work efficiently together with drivers while they're out in the field.

For this purpose, we have taken the important step to integrate a routing engine into many aspects of the **TPLUS** offerings. This means that drivers can request routes from their device at any time and the jobs are ordered in the most efficient route with pickups considered before deliveries.

The routes return in seconds and the driver can perform the jobs in the order suggested by the routing engine.

We have also integrated the routing engine into our dispatch (MMD) software and this provides unparalleled visual plotting, on maps, of the routed jobs with the lines snapped to the correct roads.

No more guesswork and you can see at a glance when a driver should arrive and monitor if they are missing their KPI's.

## 4 Business Intelligence

As businesses continue to expand and gather more data, the use of business intelligence (BI) tools such as Power BI has become increasingly popular to provide up to the minute business data visualisation.

**TPLUS™ CLOUD** enables seamless integration with various popular BI systems, allowing for real-time, event-driven feeds to be sent to BI web services.

With **TPLUS™ CLOUD**, organisations can create visually appealing reports and dashboards that provide valuable insights to clients allowing you to make data-driven decisions, track performance, and gain a competitive edge in the transport market.



## 5 Advanced Integrations

Businesses are now moving away from manual data entry and more towards computer-to-computer communication.

As a transport company, you rely on bookings coming in and tracking information being sent back to your customers, and it would be ideal if this could happen without any human involvement.

**TPLUS™ CLOUD** Advanced Integrations solves these issues by allowing your customers to have automated two-way interfaces within the TPLUS™ system.

**TPLUS™ CLOUD** uses web services/REST endpoints, also known as APIs, for the most efficient and quickest method of data transfer. This approach ensures that job bookings or track and trace data are passed between systems immediately.

If your customer does not support web services, **TPLUS™ CLOUD** also supports older file-based methodologies, giving you the flexibility to integrate with any system. This way you can streamline your operations and improve customer satisfaction.

## 6 Freight Broker Integration

**TPLUS™ CLOUD** is the perfect solution for freight brokers, with its ability to work with all types of technologies, we have established relationships and interfaces with several well-known brokers. Once an interface is established with a broker, adding more clients is as simple as making a request to the broker.

Some of the brokers we work with include:

- Machship
- Smart Freight
- My Freight
- IFS
- Connors

These relationships allow freight brokers to easily integrate their clients into the **TPLUS™ CLOUD** system, streamlining operations and increasing efficiency. With our advanced integrations, freight brokers can easily manage and track jobs, allocate them to the most suitable drivers, and provide real-time updates to their customers.





## For your management team

As a manager responsible for the daily operations of your delivery services, staying on top of everything can be a daunting task.

With so many responsibilities, including planning delivery routes, coordinating schedules, and managing fleet resources, it's important to have a solution that simplifies your operations.

**TPLUS™ CLOUD** is an advanced software solution built specifically for the courier and transport industries. Offering a wide range of features and automations that can help you streamline your delivery operations and manage your growing business more effectively.

With the flexibility of **TPLUS™ CLOUD**, you'll have all the tools you need right at your fingertips.

**TPLUS™ CLOUD** provides a central location for all of your data related to shipments. This includes features for tracking inventory, managing shipping schedules, and calculating the most efficient routes. With this information at your disposal, you'll be able to make quick, informed decisions that keep your customers' shipments on schedule and within budget.

**TPLUS™ CLOUD** also boasts a user-friendly interface and easy-to-use features, making it easy for logistics managers to stay on top of everything, even during the busiest of times.

**TPLUS™ CLOUD** is designed specifically to meet the needs of the delivery and transport industries, providing your team with the tools they need to succeed in this challenging environment. From managing inventory and transportation to communicating effectively with other members of the supply chain, the role of a logistics manager is more demanding than ever before.

Upgrade to **TPLUS™ CLOUD** today and take your delivery operations to the next level.





# Customer Success Stories

For more than 10 years Open Systems has developed our transport software system to the ever expanding requirements of our business.

Steve and his staff have always been supportive to our needs, providing technical support and effective solutions whenever required (even after hours - being the nature of the transport industry).

**MERRAN AVDALL**  
**EGL (Aust) Pty Ltd**

The functionality of the TPLUS™ CLOUD is extremely impressive and handles every need that we have and so much more, the customer service from Open Systems Consulting is fantastic, and the staff are always ready to help you in any way they can.

We're extremely happy with Open Systems Consulting and would highly recommend them to anyone looking for an effective, efficient and easy to use transport system.

**PAUL KAHLERT**  
**APT Services**





# Request a Free Demo Today

Are you looking to enhance your business operations and improve the delivery experience for your customers? Look no further than **TPLUS™ CLOUD**.

By requesting a free demo, you can discover how this innovative solution can streamline processes, increase visibility, and support your business at every stage of your logistics journey.

Don't miss out on the opportunity to take your transport business to the next level.

Request your demo now and see the benefits **TPLUS™ CLOUD** can provide.

Request your free demo today to find out how **TPLUS™ CLOUD** improves processes, enhances visibility, and supports your business on every leg of your journey.

[REQUEST YOUR FREE DEMO ↗](#)

**OSC**  
open system  
consulting