

TPLUS™ CLOUD for Your Customers

Improve your overall customer experience and give them the features they need to easily self-serve



Intuitive Web-based Dashboard Interfaces

Give your customers the power of **TPLUS™ CLOUD** in their web browser of choice. Providing them extra value, and making it easier to work closely with you like a part of your team.

With advanced features available via our web-based customer dashboard to Track daily jobs with ease, with date range tracking and specific job tracking options. All tracking shows all details of the jobs, including event times (pickup, arrival, departure, complete) and signatures and photos are also available.

Customers can see their drivers on their own Maps in near real time. With images, POD data and times, and KPI's also available via downloadable csv files.

Let your customers take control and be a part of your continued daily success.

Ready to get started improving your business and customers' delivery experience?

Request your free demo today to find out how **TPLUS™ CLOUD** improves processes, enhances visibility, and supports your business on every leg of your journey.

[REQUEST YOUR FREE DEMO ↗](#)

Simple-to-use online booking portals

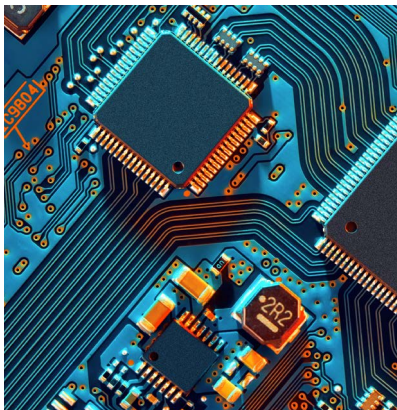
When your customers are empowered with simple yet powerful tools to interact with your business, they become a valuable extension of your team.

With the **TPLUS™ CLOUD** clients web portal, you place an easy to use booking system right in their business, allowing your customers to effortlessly book new deliveries and track jobs right from the comfort of their own office.

Give your clients the tools to work faster, and improve their processes today.

Need to deploy a robust on-premise solution for your office? TPLUS™ EXTRA is for you.

[SEE THE BENEFITS OF TPLUS™ EXTRA ↗](#)



Advanced Integrations via Application Programming Interfaces (API) & Electronic Data Interchange (EDI)

Are your customers looking for tighter integrations with existing systems, database solutions, or unify their toolsets?

Then the **TPLUS™ CLOUD API** is for you.

With the ability to securely request and deliver key information directly from within **TPLUS™ CLOUD** they'll be able to keep their processes on track using the tools they already love.

Get in touch today with our sales team to discuss how TPLUS™ CLOUD can improve your delivery needs.

[GET IN TOUCH ↗](#)

Product features for Your Customers

It doesn't matter if you're a startup business with just one vehicle, or a multi-national delivery service with thousands. We've designed **TPLUS™ CLOUD** to grow as you do and be right there with you.

Every step of the way

With rich features designed for your management and operation needs, you can be sure that **TPLUS™ CLOUD** has been developed specifically to meet the demanding requirements of the ever-growing transport and courier industries.

1 Customer-Facing Web Portals

TPLUS™ CLOUD offers robust web portals that allow customers to login and manage large volumes of jobs, including booking, tracking, and managing them on a daily basis.

These portals utilise the latest web technologies and are fully responsive, featuring options such as Daily Bookings, Advance Bookings, On Hold Bookings, Dangerous Goods Bookings, Service Filters, visual images of vehicle types and dimensions, multi-dimension entry, pallet returns, use of tolls, authority to leave, pickup availability, and email and SMS alerts.

Customers can easily set up job and driver constraints and request specific constraints per driver.

Additionally, the portals allow for the quoting of multi-leg bookings and tracking of daily jobs, date range tracking, specific job tracking, and all tracking shows all details of the jobs including event times, signatures, and photos.

2 Customer Alerts

TPLUS™ CLOUD is a powerful tool that allows you to configure various types of job alerts to be sent to your customers as they occur. These alerts can be delivered via email or SMS, giving you the flexibility to choose the most appropriate method of communication for your customers.

The alerts are triggered by specific actions taken by drivers using **TPLUS™ MOBILE**, such as entering or exiting a designated geographical area, known as a GeoFence. This ensures that your customers are always informed and up-to-date with the location and status of their jobs.

Furthermore, the alerts sent to your customers are fully customizable and can include all relevant imagery and signatures associated with the event. This allows you to maintain a professional and consistent brand image while providing your customers with the necessary information they need to stay informed. Overall, **TPLUS™ CLOUD** provides a comprehensive and efficient way to keep your customers informed and updated on the status of their jobs, giving them peace of mind and confidence in your service.

3 Business Intelligence

As businesses continue to expand and gather more data, the use of business intelligence (BI) tools such as Power BI has become increasingly popular to provide up to the minute business data visualisation.

TPLUS™ CLOUD enables seamless integration with various popular BI systems, allowing for real-time, event-driven feeds to be sent to BI web services.

With **TPLUS™ CLOUD**, organisations can create visually appealing reports and dashboards that provide valuable insights to clients allowing you to make data-driven decisions, track performance, and gain a competitive edge in the transport market.

4 Advanced Integrations

Businesses are now moving away from manual data entry and more towards computer-to-computer communication.

As a transport company, you rely on bookings coming in and tracking information being sent back to your customers, and it would be ideal if this could happen without any human involvement.

TPLUS™ CLOUD Advanced Integrations solves these issues by allowing your customers to have automated two-way interfaces within the TPLUS™ system.

TPLUS™ CLOUD uses web services/REST endpoints, also known as APIs, for the most efficient and quickest method of data transfer. This approach ensures that job bookings or track and trace data are passed between systems immediately.

If your customer does not support web services, **TPLUS™ CLOUD** also supports older file-based methodologies, giving you the flexibility to integrate with any system. This way you can streamline your operations and improve customer satisfaction.

5 3rd Party Offloading Solutions

TPLUS™ CLOUD makes it easy to configure drivers as 3rd party offload transport companies, and as soon as you allocate work to the driver, data can flow seamlessly to and from these 3rd party companies.

TPLUS™ CLOUD uses enhanced web services to ensure that data is immediately in the 3rd party system. This allows for near real-time tracking and updates, making it easy to manage and monitor jobs, regardless of the transport company handling them.

It also provides more flexibility and greater options for allocating jobs to the most suitable drivers, increasing efficiency and reducing the risk of delays or missed appointments.

TPLUS™ CLOUD keeps track of all the jobs and their statuses, making it easy to manage and monitor jobs, regardless of the transport company handling them.





For your management team

As a business leader, it's essential that your customers have an incredible experience with your company, and **TPLUS™ CLOUD** helps you achieve your customers' goals by giving them the tools they need to easily self-serve and improve their delivery experience.

At the heart of **TPLUS™ CLOUD** platform are its intuitive, easy-to-use, web-based customer portals and dashboards.

These give your customers access to the power of **TPLUS™ CLOUD** right in their web browser of choice, providing extra value and making it easier for them to work closely with your company.

Advanced features like booking new deliveries, live tracking existing jobs in near real-time, making direct payments, sending smartphone notifications, and more are available via the web-based customer dashboard. This will not only enhance their experience but also increase their loyalty and willingness to do more business with you.

Customer focused web portals and dashboards allow your customers to effortlessly work with you right from the comfort of their own office, making them a valuable extension of your team. Saving time, money, and resources, and increasing the efficiency and productivity of your customer's business.

For customers who are looking for tighter integrations with existing systems, **TPLUS™ CLOUD** also offers advanced integrations via Application Programming Interfaces (API) and Electronic Data Interchange (EDI). The **TPLUS™ CLOUD API** allows customers to securely request and deliver key information, helping them keep their processes on track using the tools they already love. This will provide a seamless integration and increase the value of your service.

With **TPLUS™ CLOUD**, you can increase customer satisfaction, loyalty and business opportunities. Contact our sales team today to discuss how **TPLUS™ CLOUD** can benefit your business and increase your sales.



Customer Success Stories

For more than 10 years Open Systems has developed our transport software system to the ever expanding requirements of our business.

Steve and his staff have always been supportive to our needs, providing technical support and effective solutions whenever required (even after hours - being the nature of the transport industry).

MERRAN AVDALL
EGL (Aust) Pty Ltd

The functionality of the TPLUS™ CLOUD is extremely impressive and handles every need that we have and so much more, the customer service from Open Systems Consulting is fantastic, and the staff are always ready to help you in any way they can.

We're extremely happy with Open Systems Consulting and would highly recommend them to anyone looking for an effective, efficient and easy to use transport system.

PAUL KAHLERT
APT Services



Request a Free Demo Today

Are you looking to enhance your business operations and improve the delivery experience for your customers? Look no further than **TPLUS™ CLOUD**.

By requesting a free demo, you can discover how this innovative solution can streamline processes, increase visibility, and support your business at every stage of your logistics journey.

Don't miss out on the opportunity to take your transport business to the next level.

Request your demo now and see the benefits **TPLUS™ CLOUD** can provide.

Request your free demo today to find out how **TPLUS™ CLOUD** improves processes, enhances visibility, and supports your business on every leg of your journey.

[REQUEST YOUR FREE DEMO ↗](#)

OSC
open system
consulting